

THE magazine for AAA members

journey

puget sound

TRAVEL 2013

Where will you go?

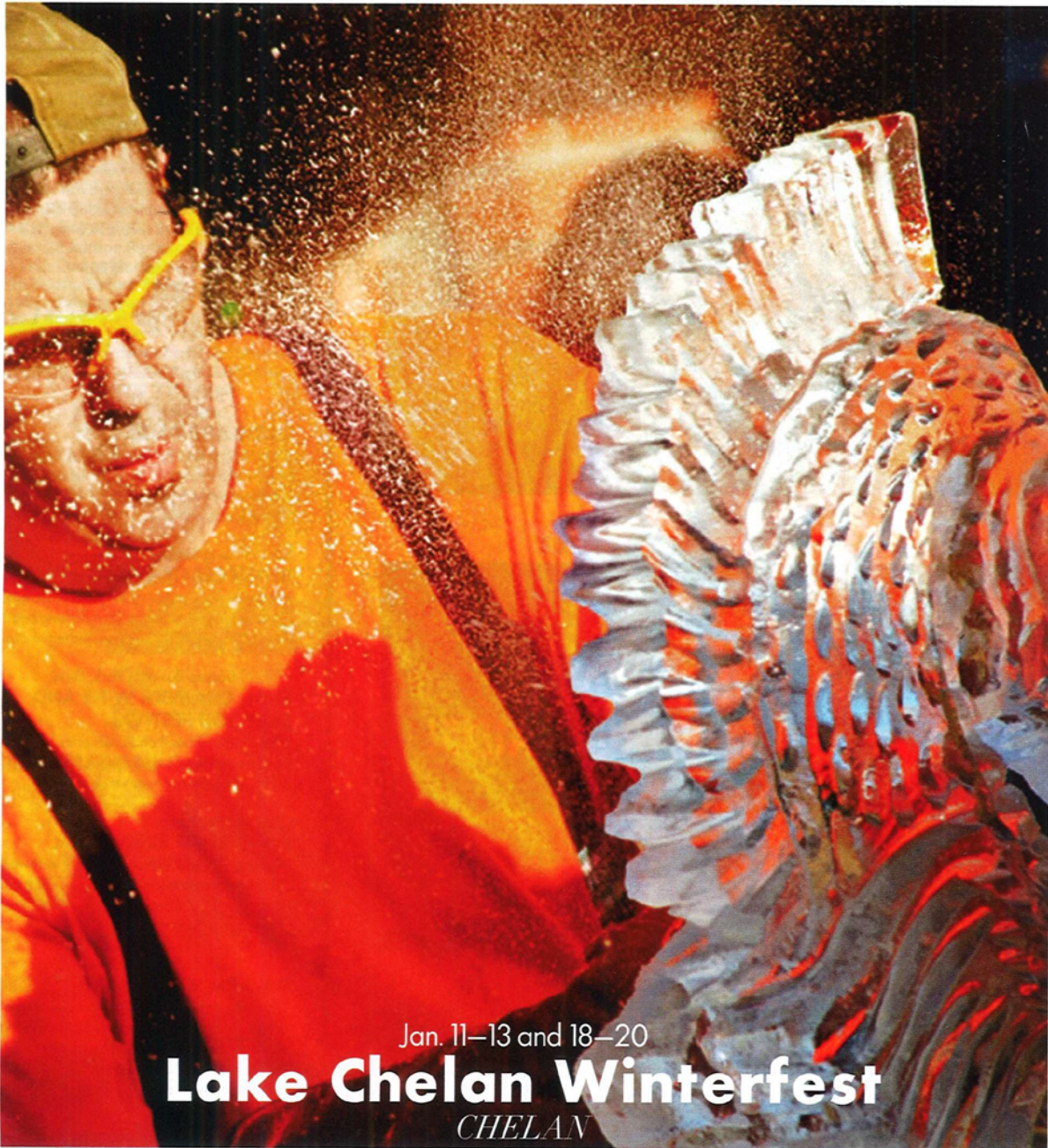
The Mediterranean • Palau • Sedona • Winthrop
Northwest Byways & more



january/february 2013

itinerary

top picks for fun northwest happenings • january/february 2013



Jan. 11–13 and 18–20

Lake Chelan Winterfest

CHELAN

Carvers transform more than 20,000 pounds of ice into an outdoor sculpture gallery during this celebration of winter, which also features sleigh rides through downtown Chelan, snow sports, a beach bonfire and a chili tasting. (800) 424-3526, www.lakechelanwinterfest.com.

www.AAAwashingtonjourney.com 55

itinerary

lovelorn artists living in 19th-century Paris.
(800) 426-1619. www.seattleopera.org.

Feb. 28–Mar. 3 Hyatt Regency, Bellevue
WINTERGRASS MUSIC FESTIVAL
Concerts of traditional American acoustic and bluegrass music take place on four stages.
(253) 428-8056. www.acousticssound.org.

IDAHO

Jan. 12 Schweitzer Mountain
WINTER TRAILS DAY
Try out the mountain's 20 miles of cross-country and snowshoe trails for free. (208) 263-9555.
www.schweitzer.com.

Jan. 25–Feb. 3 McCall
MCCALL WINTER CARNIVAL
"Winter Magic" comes to the quaint Idaho town in the form of a snow-sculpting championship, a Mardi Gras parade and fireworks over Payette Lake.
(800) 260-5130. www.mccallchamber.org.

Feb. 1–2 Pierce
PIERCE WINTER FESTIVAL
The activities include sledding at Bald Mountain Ski Area, a snowman contest, live music and more.
(208) 464-2171. www.pierce-weippechamber.com.

Feb. 15–21 Sandpoint
WINTER CARNIVAL
This family-friendly winter celebration features skijoring at the fairgrounds, a rail jam for skiers and snowboarders, and a keg pull for canines.
(800) 800-2106. www.visitsandpoint.info.

Feb. 20–23 University of Idaho, Moscow
LIONEL HAMPTON JAZZ FESTIVAL
Top jazz artists from around the world lead workshops with students by day and perform in concerts by night.
(208) 885-6765. www.uidaho.edu/jazzfest.

OREGON

Jan. 25–27 Eugene
OREGON TRUFFLE FESTIVAL
Chefs, foragers and fans of truffles hunt for, prepare and devour the flavorful delicacies. (503) 296-5929.
www.oregontrufflefestival.com.

Jan. 26 Lincoln City
MARDI GRAS JAMBALAYA COOK-OFF
Oregon coast chefs square off in a showdown inspired by Creole cuisine. (800) 452-2151. www.oregoncoast.org.

Feb. 15–24 Portland
PORTLAND JAZZ FESTIVAL
Regional, national and international artists perform across town, while lectures, film screenings and other events round out the fun. (503) 228-5299. www.pdxjazz.com.

BRITISH COLUMBIA

Jan. 12–20 Sun Peaks Resort
WINTER FESTIVAL OF WINE
Wine tasting pairs well with recreation during this festival

EXCITING EXPOSITIONS

Find inspiration for new projects and adventures at the following shows and expositions:

Jan. 10–11 Yakima SunDome
Yakima Ag Expo
(509) 248-2900. www.yakimaagexpo.com.

Jan. 12–13 Washington State Convention Center, Seattle
Seattle Wedding Show
(800) 505-5900. www.weddingshow.com.

Jan. 23–27 Tacoma Dome
Tacoma Home and Garden Show
(253) 756-2121. www.otshows.com.

Jan. 23–27 Puyallup Fair and Events Center
Washington Sportsmen's Show
(503) 246-8291. www.thesportsshow.com.

Jan. 24–27 Spokane County Fair & Expo Center
Inland Northwest RV Show and Sale
(509) 466-4256. www.spokanervshow.com.

Jan. 25–Feb. 3 CenturyLink Field Event Center and South Lake Union, Seattle
Seattle Boat Show
(206) 634-0911. www.seattleboatshow.com.

Feb. 8–10 CenturyLink Field Event Center, Seattle
Seattle Golf and Travel Show
(866) 485-2899. www.seattlegolfshow.com.

Feb. 15–17 Spokane County Fair & Expo Center
Spokane International Auto Show
(509) 995-1100. www.spokaneautoshow.com.

Feb. 20–24 Washington State Convention Center, Seattle
Northwest Flower and Garden Show
(253) 756-2121. www.gardenshow.com.

Visit www.AAAwashingtonjourney.com/events for additional exposition listings.

featuring varieties from Okanogan Valley, plus culinary events. (800) 807-3257.
www.sunpeaksresort.com.

Feb. 1–10 Vernon
VERNON WINTER CARNIVAL
Snow sculptures and a hot-air balloon fiesta are highlights of this event near Silver Star ski resort.
(250) 545-2236. www.vernonwintercarnival.com.

Feb. 1–10 Victoria
VICTORIA FILM FESTIVAL
Special events, receptions and discussions accompany film screenings in venues across town.
(250) 389-0444. www.victoriafilmfestival.com.

For information on more events and activities, visit www.AAAwashingtonjourney.com/events. Since events are subject to change, we recommend calling ahead to confirm listing information.

itinerary

ability levels—from novice to instructor. (425) 299-2794, www.nwyogaconference.com.

Feb. 9 Hing Hay Park, Seattle
LUNAR NEW YEAR CELEBRATION
Lion and dragon dances lead the festivities. (206) 382-1197, www.cidbia.org.

Feb. 9 Bellingham Golf and Country Club
MARDI GRAS GALA AND AUCTION
Proceeds from the Assistance League of Bellingham's annual fundraiser are used to purchase clothes for area kids and adults in need. www.assistanceleaguebellingham.org.

Feb. 9–10 Ocean Shores Convention Center
ANTIQUE AND COLLECTIBLE SHOW
More than 80 vendors present antiques—ranging from furniture to vintage baseball cards—and experts can help you evaluate your treasures. (360) 289-4411, www.oceanshoresact.com.

Feb. 14–17 Ellensburg
SPIRIT OF THE WEST COWBOY GATHERING
Celebrate the Western cowboy/cowgirl way of life at dances, a fiddle contest, a chuck wagon cook-off and other activities. (888) 925-2204, www.ellensburgcowboygathering.com.

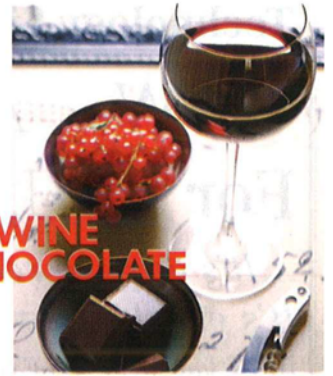
Feb. 16–17 Winthrop
SNOWSHOE SOFTBALL
Just like it sounds: a coed softball tournament played by teams wearing snowshoes and using fluorescent yellow balls for visibility on the snowy ball field. (888) 463-8469, www.winthropwashington.com.

Feb. 23 Kent Commons
GREEN RIVER GLASS SHOW AND SALE
The array of glass, pottery and collectibles reflects coveted styles from the early- and mid-20th century. (253) 852-5250.

Feb. 23 La Conner
SMELT DERBY FESTIVAL/SMELT RUN
The pancake breakfast, 5k/10k Smelt Run, and Fishing for Smelt Derby add up to a full day of fun for all ages. (888) 642-9284, www.laconnerchamber.com.

Feb. 23–24 Langley
MYSTERY WEEKEND
Visitors and residents alike have clued in to how fun this annual murder mystery event can be, as the whole seaside town stages an interactive whodunit. (360) 221-6765, www.visitlangley.com.

Feb. 23–Mar. 10 McCaw Hall, Seattle
LA BOHÈME
Seattle Opera performs Puccini's classic work about



RED WINE & CHOCOLATE

Several of Washington's wine regions celebrate the natural affinity between red wine and chocolate with special pairing events in February. Visit each wine region's website for particulars about its Red Wine and Chocolate offerings.

Feb. 8–10 and 14–17 Wenatchee Wine Country
17 participating wineries; www.wenatcheewines.com.

Feb. 9–10 and 16–17 Lake Chelan Wine Valley
18 participating wineries; (509) 682-3503, www.lakechelanwinevalley.com.

Feb. 9–10 and 16–18 Olympic Peninsula
8 participating wineries; (800) 785-5495, www.olympicpeninsulawineries.org.

Feb. 16–17 Yakima Valley
More than 50 participating wineries; (800) 258-7270, www.wineyakimavalley.org.